

N Reactor Timeline



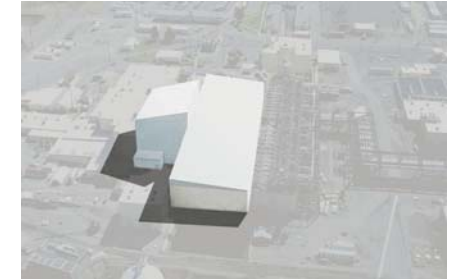
Construction begins on only dual-purpose reactor in the U.S.
1959



N Reactor is shut down
1987



Reactor powerhouse demolition
June 2008



N Reactor cocooned
September 2012



Construction of reactor and heat exchanger building
January 1965



Steam pipe trestle demolition
February 2006



Recirculation building demolition
December 2008



Heat exchanger building demolition
March 2009



River water pumphouse demolition
2010

