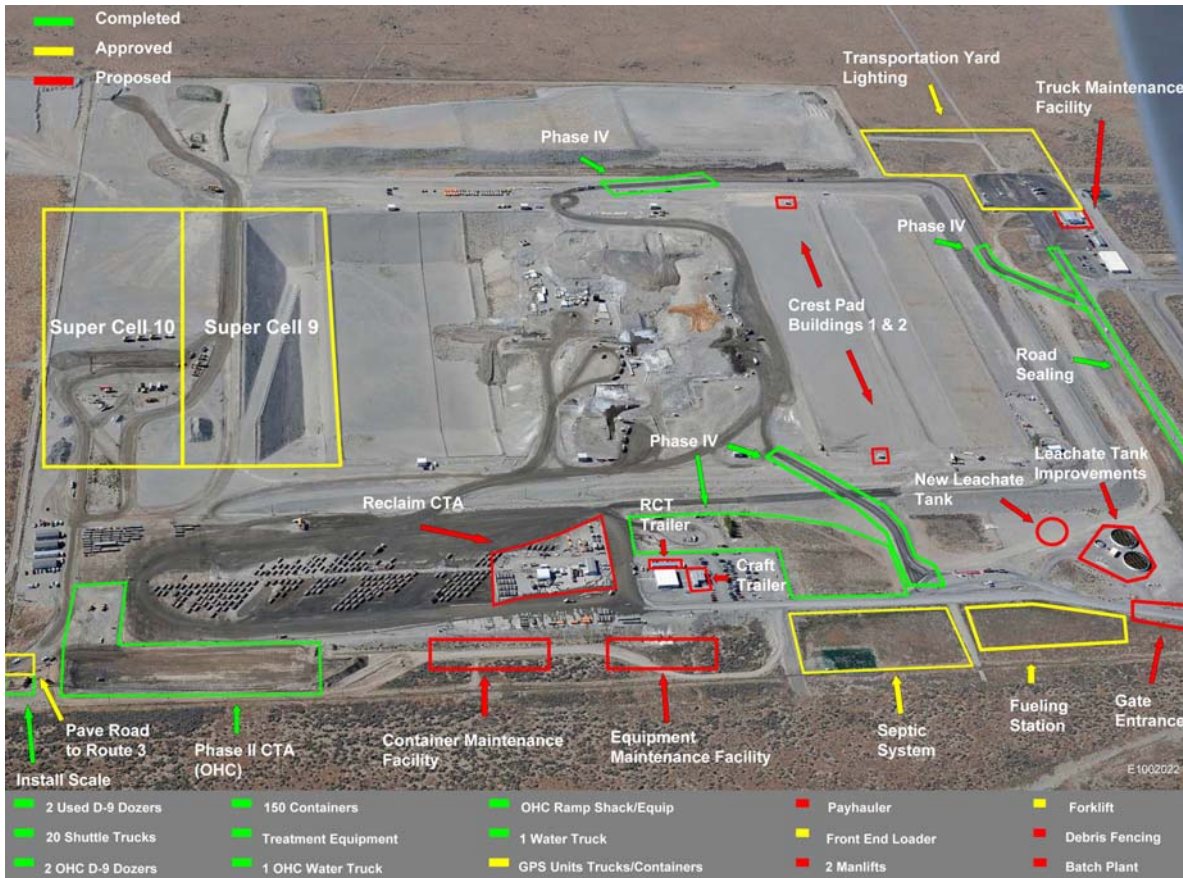


ERDF Expansion and Upgrades



Recovery Act Work at the Environmental Restoration Disposal Facility

The photograph above illustrates expansion or upgrades underway or proposed using Recovery Act funds. Those highlighted in green are finished. Those highlighted in yellow are approved, and those in red are proposed.

ERDF Facts

- Super cell 9 & 10 expansion will increase capacity by 50 percent to 16.4 million tons.
- Workers will excavate about three million cubic yards of soil for super cells 9 & 10.
- Each cell will have a capacity of about 2.8 million tons of contaminated material.
- Each day, ERDF receives about 300 containers of waste for disposal. Each container averages about 20 tons of material.
- More than 400 ARRA-related jobs (84 full-time equivalents) have been created by Washington Closure Hanford, and about 37 percent of those are related to ERDF.
- An estimated \$100 million will be spent on ERDF expansion and upgrades – \$55 million on expansion and \$45 million on upgrades.
- More than nine million tons of contaminated material have been disposed at ERDF since it opened in 1996.